

MONTHLY MEMBERSHIP PROGRESS REPORT

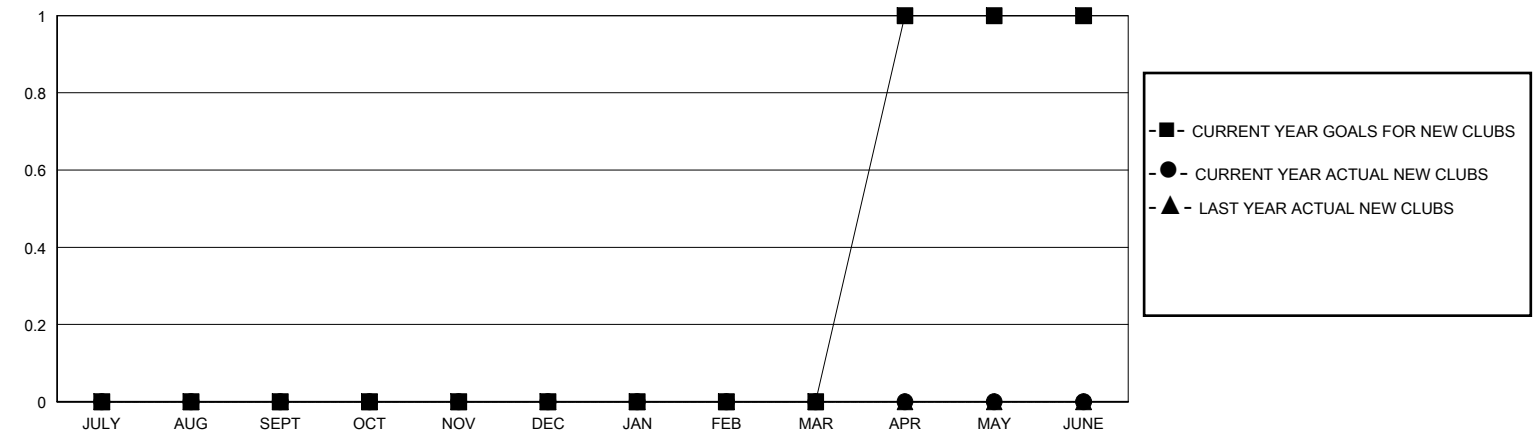
District 11 D1

Results as of: 4/30/2025

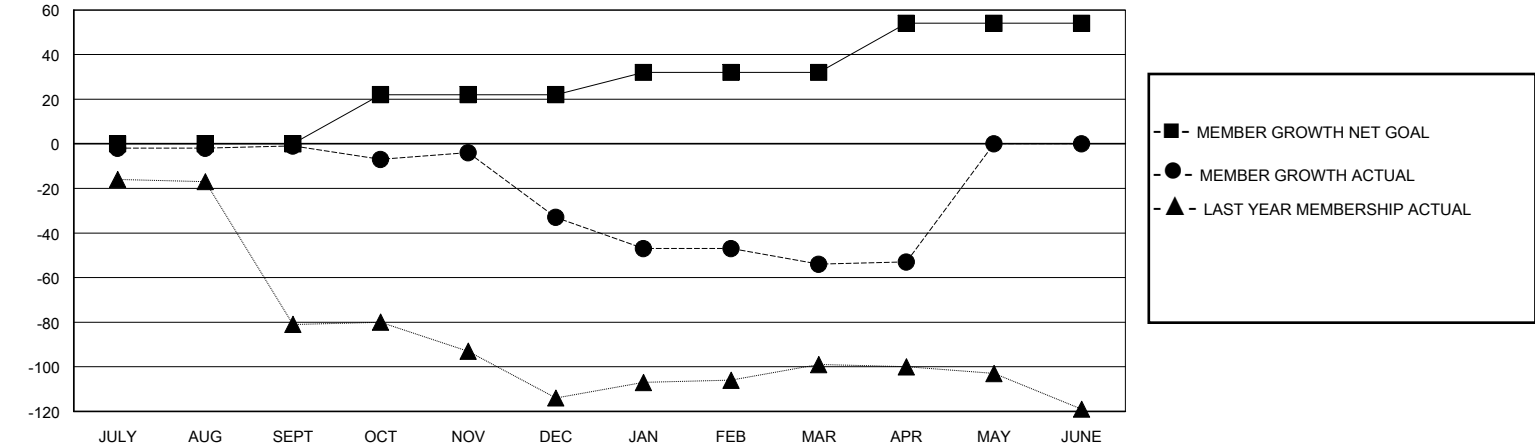
GMT: LOCATION MICHIGAN GMT CA			
Clubs			
RESULTS FOR 2024-2025			
QUARTER	NEW CLUB GOAL	NEW CLUBS	DROPPED CLUBS
JULY/AUG/SEPT	0	0	0
OCT/NOV/DEC	0	0	0
JAN/FEB/MAR	0	0	0
APR/MAY/JUNE	1	0	0

Members			
RESULTS FOR 2024-2025			
QUARTER	MEMBER GROWTH NET GOAL	MEMBER GROWTH ACTUAL	DROPPED MEMBERS ACTUAL (including transfers)
JULY/AUG/SEPT	0	14	15
OCT/NOV/DEC	22	19	49
JAN/FEB/MAR	10	11	30
APR/MAY/JUNE	22	3	1

GOALS AND ACTUAL NEW CLUBS CUMULATIVE



GOALS AND ACTUAL MEMBERS CUMULATIVE



DROPPED CLUBS: 0		14 CLUBS OF 34 ADDED 1 OR MORE NEW MEMBERS	<u>GENDER DISTRIBUTION</u>	
			MALE	610 (68.62%)
			FEMALE	279 (31.38%)
<u>DROPPED MEMBERS</u>		CLICK HERE FOR CUMULATIVE MEMBERSHIP DATA		
DECEASED	24		TOTAL FAMILY UNIT MEMBERS 0	
CLUB CANCELLED	0			
OTHER	71		FAMILY MEMBERS PAYING HALF DUES 0	
TOTAL	95			